

Used Products

TOOTH - Veneer - Composite - Variolink N LC - Tetric N-Bond

☐ **Variolink N LC**

The microfilled, purely light-curing luting composite system



☐ **Proxyl fluoride-free**

Prophy paste without fluoride



☐ **OptraStick**

Application instrument that features a flexible adhesive tip



☐ **Ivoclean**

The universal cleaning paste Ivoclean effectively cleans the bonding surfaces of prosthetic restorations after intraoral try-in



☐ **Monobond N**

Monobond N is the universal primer for the conditioning of all types of restoration surfaces



☐ **OptraDam**

Anatomically shaped rubber dam for the absolute isolation of the working field



☐ **N-Etch**

N-Etch is an etching gel containing 37% phosphoric acid



☐ **Tetric N-Bond**

Light-curing, nano-filled single-component adhesive which is used in conjunction with the total etch technique



☐ **Liquid Strip**

Glycerine gel to prevent the oxygen-inhibited layer of composites with composite or ceramic restorations



☐ **OptraPol**

OptraPol is excellently suitable for finishing and polishing all popular composite materials in a single step


☐ **Fluor Protector**

Fluor Protector is a protective fluoride varnish for desensitization and caries prophylaxis



Flowchart Variolink N LC

TOOTH - Veneer - Composite - Variolink N LC - Tetric N-Bond

1 The temporary is removed



The temporary is removed. If necessary, any leftover temporary cement is removed from the preparation with a polishing brush and cleaning paste free of oil and fluoride (e.g. **Proxyl fluoride-free**). Subsequently, the preparation is dried with moisture-free and oil-free air.

2 The restoration is tried in



The occlusion is checked very carefully to prevent the restoration from fracturing. If necessary, proximal contacts are adjusted and polished with ceramic polishers.



For optimum esthetic results, the shade of the restoration is checked with **Variolink N Try-In** pastes. After try-in, the paste is thoroughly removed with water spray and the restoration is dried with oil-free and moisture-free air.

3 The restoration is pretreated



The restoration is sandblasted according to the directions of the manufacturer of the restorative materials (e.g. **SR Nexco**, 2 bar, Al_2O_3 100 μm). Alternatively, the restoration is roughened with finishing diamonds.



Monobond N is applied to the pretreated surfaces with a brush or microbrush and left to react for 60 seconds. Subsequently, it is dried with a vigorous stream of air.

4 The preparation is isolated and cleaned



Relative isolation of the treatment field - preferably with **OptraDam** or alternatively with absorbent pads and a saliva ejector - is indispensable.



The preparation is cleaned with a polishing brush and moisture-free and fluoride-free cleaning paste (e.g. **Proxyl fluoride-free**). Then it is rinsed with water spray. Subsequently, it is dried with air free of oil and moisture. Overdrying must be avoided.

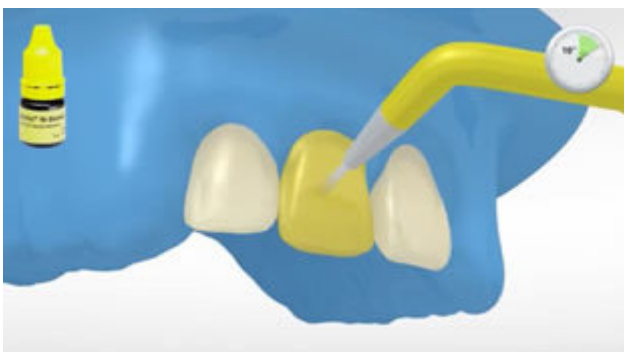
5 The preparation is pretreated and the adhesive is applied



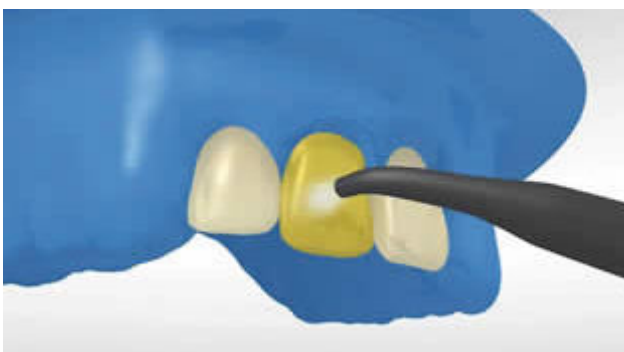
First **N-Etch** (37% phosphoric acid gel) is applied to the prepared enamel and then to the dentin (if available). The phosphoric acid is left to react for 15–30 seconds on enamel and for 10–15 seconds on dentin.



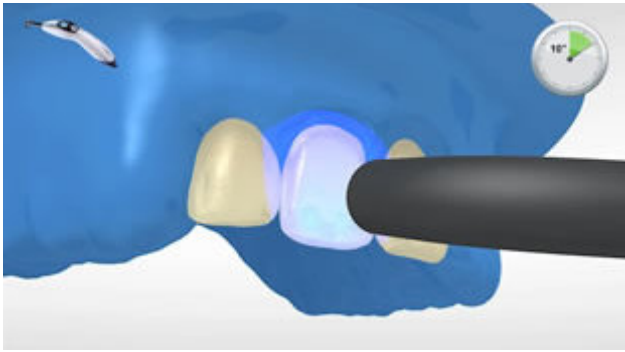
Then the gel is thoroughly rinsed off for at least 5 seconds with a vigorous stream of water. Excess moisture is removed until the dentin surface looks slightly moist and shiny (wet-bonding).



Next, a thick layer of **Tetric N-Bond** is applied to enamel and dentin and gently scrubbed in for at least 10 seconds.

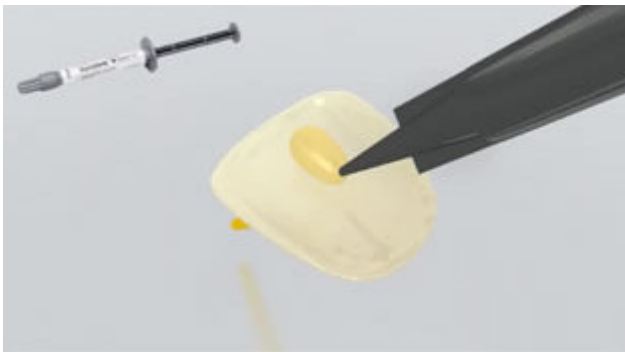


Excess **Tetric N-Bond** is blown to a thin film with a weak stream of air. Pooling must be avoided. A glossy appearance indicates that the surface has been completely sealed.



Light-cure **Tetric N-Bond** for 10 seconds at a light intensity of more than 500 mW/cm².

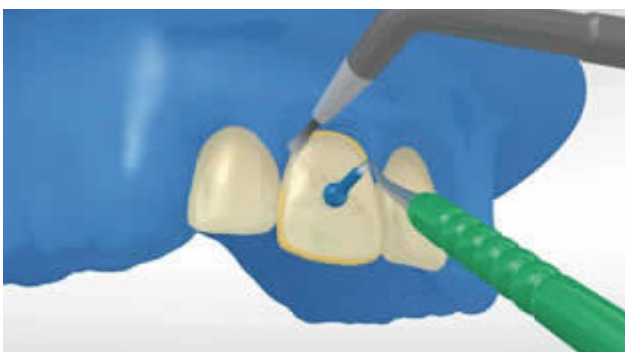
6 The restoration is seated with Variolink N LC



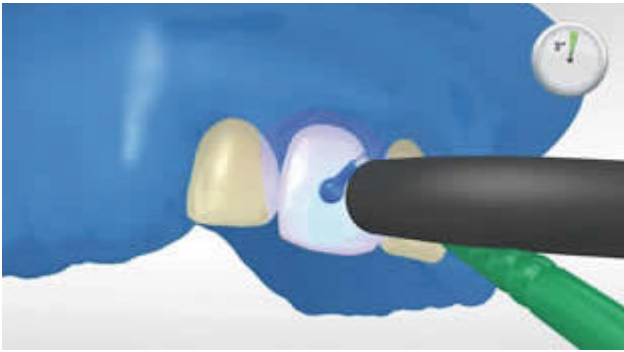
Variolink N LC is applied directly to the preparation with a brush or spatula and/or with the help of an applicator tip. If desired, the luting composite can be applied to the inner surface of the restoration.



The restoration is seated and held in place using light constant pressure.



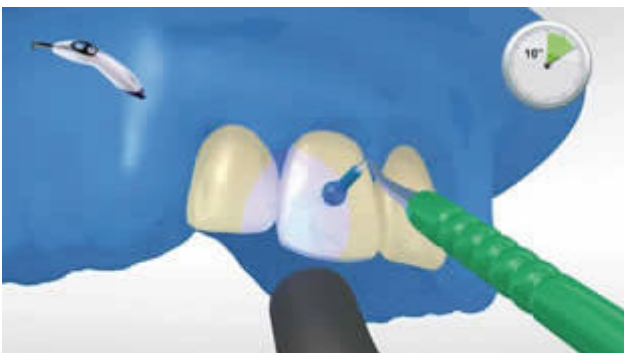
Gross excess is removed with a suitable instrument (e.g. spatula, brush). Care must be taken to remove all excess in hard-to-reach areas (proximal, gingival margins).



Pressure should be maintained on the restoration while it is tacked into place by light-curing a small area for 3-4 seconds (e.g. **Bluephase N**, 650 mW/cm², LOW-mode). Any excess is removed with a suitable instrument.



Like all composites, **Variolink N LC** is subject to oxygen inhibition. In order to avoid this problem, it is advisable to cover the restoration margins with glycerine gel/air block (e.g. **Liquid Strip**) immediately after the removal of excess cement.



When a polymerization unit with a light intensity of at least 800 mW/cm² is used, the composite resin must be cured for 10 seconds per mm thickness and segment (e.g. **Bluephase N**, HIGH mode, 1,200 mW/cm²).



Liquid Strip is rinsed off and the rubber dam is removed.

7 The completed restoration is finished



Proximal areas are adjusted with finishing and polishing strips. The occlusion and functional movements are checked and adjusted if necessary. The restoration margins are polished with polishers (e.g. **OptraPol**) or discs.

8 The teeth are fluoridated



A thin film of **Fluor Protector** is applied with a Vivabrush or brush and distributed evenly. The varnish is dried with an air syringe.