

Used Products

TOOTH - Veneer - Glass-ceramics - Variolink Esthetic - Adhese Universal

Variolink Esthetic

The esthetic, light- and dual-curing adhesive luting system



Proxyt fluoride-free

Prophy paste without fluoride



OptraStick

Application instrument that features a flexible adhesive tip



Monobond Etch&Prime

Monobond Etch & Prime is the first single-component ceramic primer in the world, which allows you to etch and silanate glass-ceramic surfaces in one easy step



OptraDam

Anatomically shaped rubber dam for the absolute isolation of the working field



Total Etch

Total Etch is an etching gel containing 37% phosphoric acid



Adhese Universal

Adhese Universal is a single-component, light-cured adhesive for direct and indirect bonding procedures that features compatibility with all etching techniques



Liquid Strip

Glycerine gel to prevent the oxygen-inhibited layer of composites with composite or ceramic restorations



OptraPol

OptraPol is excellently suitable for finishing and polishing all popular composite materials in a single step



Fluor Protector

Fluor Protector is a protective fluoride varnish for desensitization and caries prophylaxis



Flowchart Variolink Esthetic

TOOTH - Veneer - Glass-ceramics - Variolink Esthetic - Adhese Universal

1 The temporary is removed



The temporary is removed. If necessary, any leftover temporary cement is removed from the preparation with a polishing brush and cleaning paste free of oil and fluoride (e.g. **Proxyl fluoride-free**). Subsequently, the preparation is dried with moisture-free and oil-free air.

2 The restoration is tried in

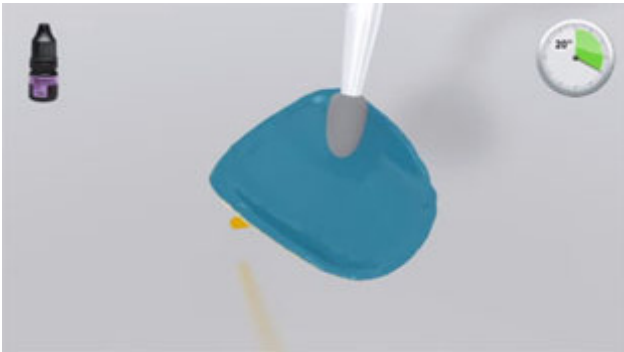


The permanent restoration is tried in. At this stage, the shade, accuracy of fit and occlusion of the restoration are checked.

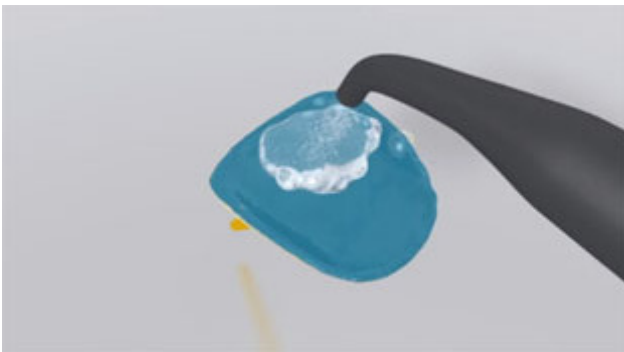


In order to evaluate the overall effect of the restoration **Variolink Esthetic Try-In** pastes can be used. Following try-in, thoroughly rinse the restoration with water spray and dry with oil- and waterfree air.

3 The restoration is pretreated



Apply **Monobond Etch & Prime** on the adhesive surface using a microbrush and agitate it into the surface for 20 seconds. Allow to react for another 40 seconds.



Then thoroughly rinse off **Monobond Etch & Prime** with water and dry the restoration with a strong jet of water- and oil-free air for approximately 10 seconds.

4 The preparation is isolated and cleaned



Relative isolation of the treatment field - preferably with **OptraDam** or alternatively with absorbent pads and a saliva ejector - is indispensable.



The preparation is cleaned with a polishing brush and moisture-free and fluoride-free cleaning paste (e.g. **Proxyl fluoride-free**). Then it is rinsed with water spray. Subsequently, it is dried with air free of oil and moisture. Overdrying must be avoided.

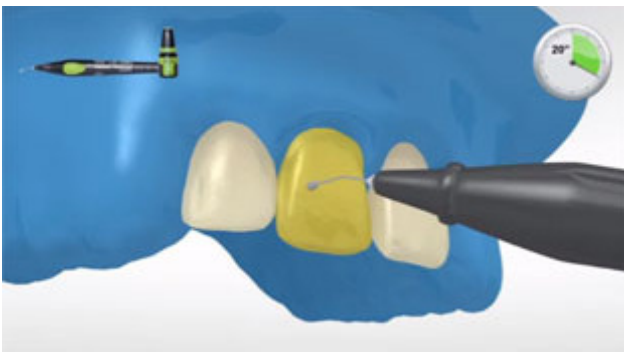
5 The preparation is pretreated and the adhesive is applied



Optionally: First **Total Etch** (37% phosphoric acid gel) is applied to the prepared enamel and then to the dentin (if available). The phosphoric acid is left to react for 15–30 seconds on enamel and for 10–15 seconds on dentin.



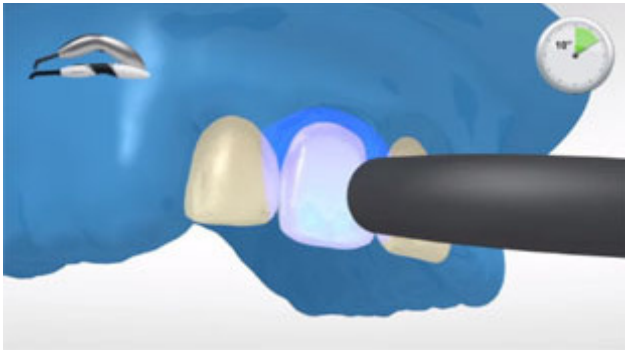
Then rinse thoroughly with a vigorous stream of water for at least 5 seconds and dry with compressed air until the etched enamel surfaces appear chalky white.



Starting with the enamel, thoroughly coat the tooth surfaces to be treated with **Adhese Universal**. The adhesive must be scrubbed into the surface for at least 20 seconds.

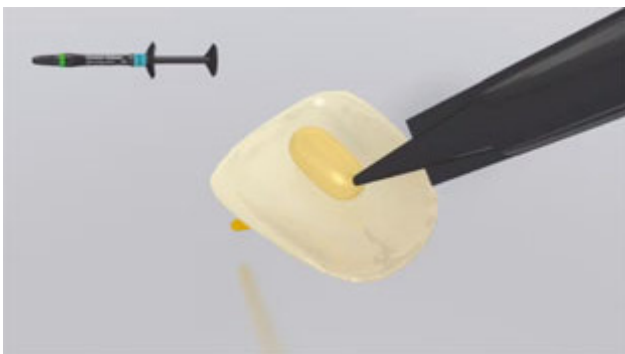


Disperse **Adhese Universal** with oil- and moisture-free compressed air until a glossy, immobile film layer results. Avoid pooling.



Light-cure **Adhese Universal** for 10 seconds using a light intensity of at least 500 mW/cm² (e.g. **Bluephase Style**).

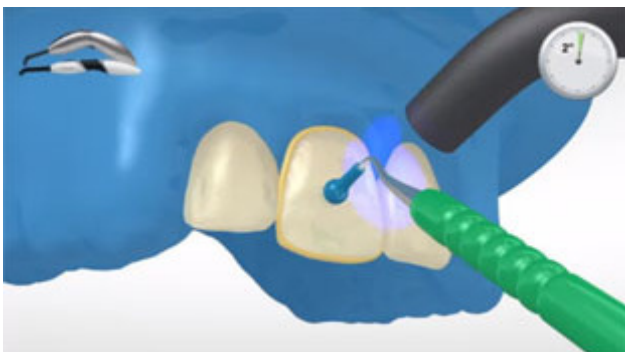
6 Seating of the restoration using Variolink Esthetic



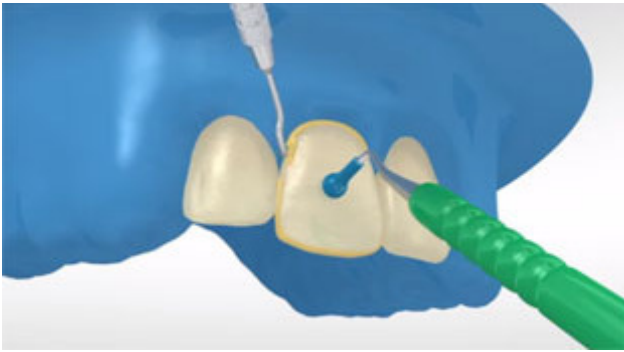
Apply **Variolink Esthetic LC** with the application tip or brush/spatula directly to the internal surface of the restoration.



The restoration is seated and held in place using light constant pressure.



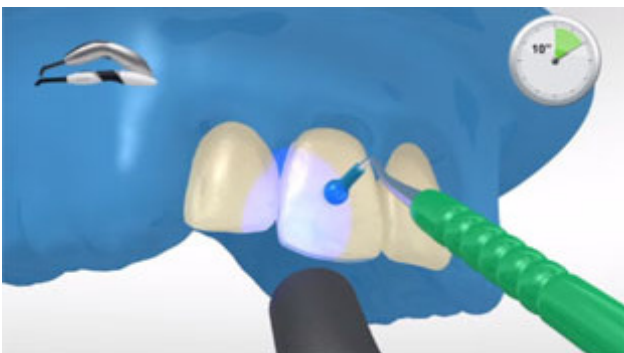
Light-cure excess material with a polymerization light (light intensity $\geq 500\text{mW/cm}^2$; e.g. **Bluephase Style**) for **2 seconds** at a distance of 10 – 15 mm by running the light probe along the entire cement line.



The gel-like excess material can be easily removed with a scaler.



As with all composite systems, **Variolink Esthetic** is subject to oxygen inhibition. To prevent this, cover the restoration margins with glycerine gel/air block (e.g. **Liquid Strip**) immediately after excess removal.



When a polymerization unit with a light intensity of at least 1000 mW/cm^2 is used, the ceramic must be cured for 10 seconds per mm thickness and segment (e.g. **Bluephase Style**).



Liquid Strip is rinsed off and the rubber dam is removed.

7 The completed restoration is finished



Proximal areas are adjusted with finishing and polishing strips. The occlusion and functional movements are checked and adjusted if necessary. The restoration margins are polished with polishers (e.g. **OptraPol**) or discs.

8 The teeth are fluoridated



A thin film of **Fluor Protector** is applied with a Vivabrush or brush and distributed evenly. The varnish is dried with an air syringe.