

Used Products

TOOTH - Veneer - Lab Composite - Variolink Esthetic - Syntac

☐ Variolink Esthetic

The esthetic, light- and dual-curing adhesive luting system



☐ Proxyl fluoride-free

Prophy paste without fluoride



☐ OptraStick

Application instrument that features a flexible adhesive tip



☐ Monobond Plus

Monobond Plus is the universal primer for the conditioning of all types of restoration surfaces



☐ OptraDam

Anatomically shaped rubber dam for the absolute isolation of the working field



☐ Total Etch

Total Etch is an etching gel containing 37% phosphoric acid



☐ Syntac

Syntac is the classic bonding agent for a sound chemical bond between composite material and tooth structure



☐ Liquid Strip

Glycerine gel to prevent the oxygen-inhibited layer of composites with composite or ceramic restorations



☐ OptraPol

OptraPol is excellently suitable for finishing and polishing all popular composite materials in a single step



☐ **Fluor Protector**

Fluor Protector is a protective fluoride varnish for desensitization and caries prophylaxis



Flowchart Variolink Esthetic

TOOTH - Veneer - Lab Composite - Variolink Esthetic - Syntac

1 The temporary is removed



The temporary is removed. If necessary, any leftover temporary cement is removed from the preparation with a polishing brush and cleaning paste free of oil and fluoride (e.g. **Proxyl fluoride-free**). Subsequently, the preparation is dried with moisture-free and oil-free air.

2 The restoration is tried in



The permanent restoration is tried in. At this stage, the shade, accuracy of fit and occlusion of the restoration are checked.



In order to evaluate the overall effect of the restoration **Variolink Esthetic Try-In** pastes can be used. Following try-in, thoroughly rinse the restoration with water spray and dry with oil- and waterfree air.

3 The restoration is pretreated



The restoration is sandblasted according to the directions of the manufacturer of the restorative materials (e.g. **SR Nexco**, 2 bar, Al_2O_3 100 μm). Alternatively, the restoration is roughened with finishing diamonds.



Monobond Plus is applied to the pretreated surfaces with a brush or microbrush and left to react for 60 seconds. Subsequently, it is dried with a vigorous stream of air.

4 The preparation is isolated and cleaned



Relative isolation of the treatment field - preferably with **OptraDam** or alternatively with absorbent pads and a saliva ejector - is indispensable.



The preparation is cleaned with a polishing brush and moisture-free and fluoride-free cleaning paste (e.g. **Proxyl fluoride-free**). Then it is rinsed with water spray. Subsequently, it is dried with air free of oil and moisture. Overdrying must be avoided.

5 The preparation is pretreated and the adhesive is applied



First **Total Etch** (37% phosphoric acid gel) is applied to the prepared enamel and then to the dentin (if available). The phosphoric acid is left to react for 15–30 seconds on enamel and for 10–15 seconds on dentin.



Then rinse thoroughly with a vigorous stream of water for at least 5 seconds and dry with compressed air until the etched enamel surfaces appear chalky white.



Syntac Primer is lightly brushed in the preparation. Syntac Primer should remain on the dentin for at least 15 seconds. Excess Syntac Primer is dispersed with air and thoroughly dried. It must not be rinsed off!

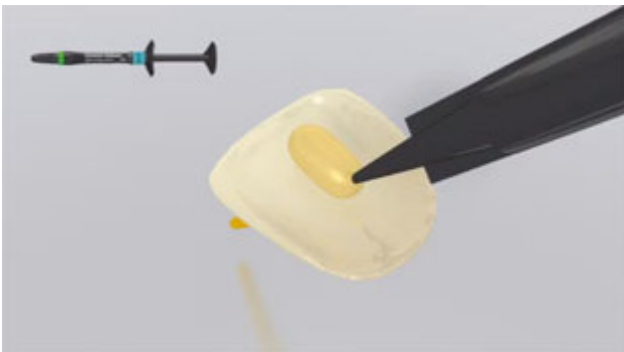


Syntac Adhesive is applied and allowed to react for 10 seconds. Then the preparation is dried completely with an air syringe. It must not be rinsed off!



Heliobond is applied and blown to a thin film.
Heliobond is polymerized together with the luting material.

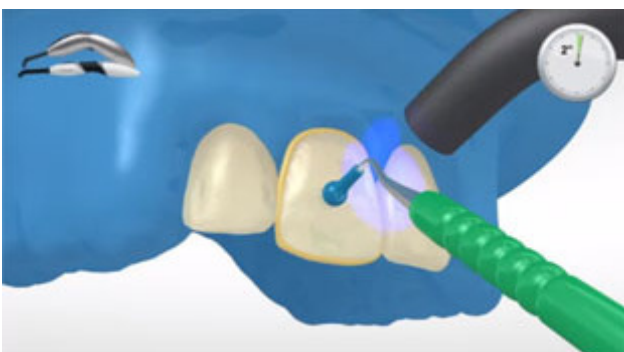
6 Seating of the restoration using Variolink Esthetic



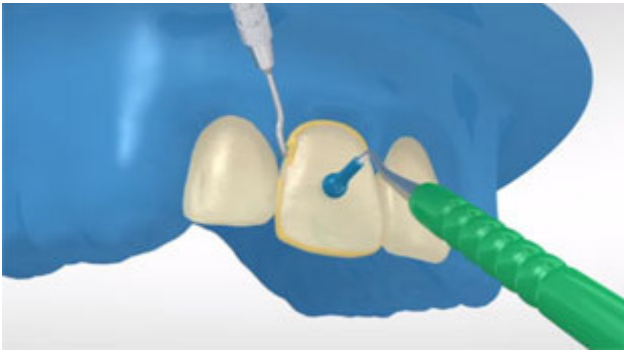
Apply **Variolink Esthetic LC** with the application tip or brush/spatula directly to the internal surface of the restoration.



The restoration is seated and held in place using light constant pressure.



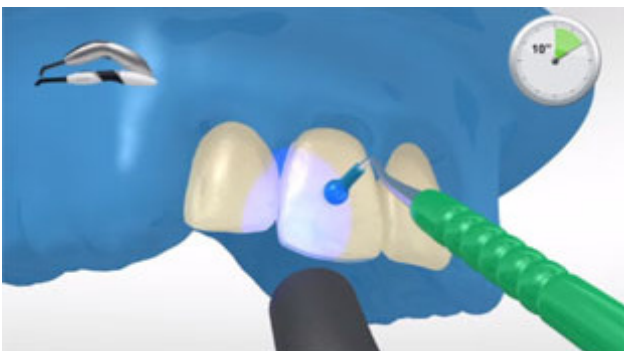
Light-cure excess material with a polymerization light (light intensity $\geq 500\text{mW/cm}^2$; e.g. **Bluephase Style**) for **2 seconds** at a distance of 10 – 15 mm by running the light probe along the entire cement line.



The gel-like excess material can be easily removed with a scaler.



As with all composite systems, **Variolink Esthetic** is subject to oxygen inhibition. To prevent this, cover the restoration margins with glycerine gel/air block (e.g. **Liquid Strip**) immediately after excess removal.



When a polymerization unit with a light intensity of at least 1000 mW/cm^2 is used, the composite resin must be cured for 10 seconds per mm thickness and segment (e.g. **Bluephase Style**).



Liquid Strip is rinsed off and the rubber dam is removed.

7 The completed restoration is finished



Proximal areas are adjusted with finishing and polishing strips. The occlusion and functional movements are checked and adjusted if necessary. The restoration margins are polished with polishers (e.g. **OptraPol**) or discs.

8 The teeth are fluoridated



A thin film of **Fluor Protector** is applied with a Vivabrush or brush and distributed evenly. The varnish is dried with an air syringe.