

Used Products

TOOTH - Root post - Fiber-reinforced composite - SpeedCEM Plus

☐ **SpeedCEM Plus**

The self-adhesive, self-curing resin cement with light-curing option



☐ **OptraDam**

Anatomically shaped rubber dam for the absolute isolation of the working field



☐ **Total Etch**

Total Etch is an etching gel containing 37% phosphoric acid



☐ **Monobond Plus**

Monobond Plus is the universal primer for the conditioning of all types of restoration surfaces



☐ **ExciTE F**

ExciTE F is a light-curing, fluoride releasing, single-component total-etch adhesive



☐ **MultiCore**

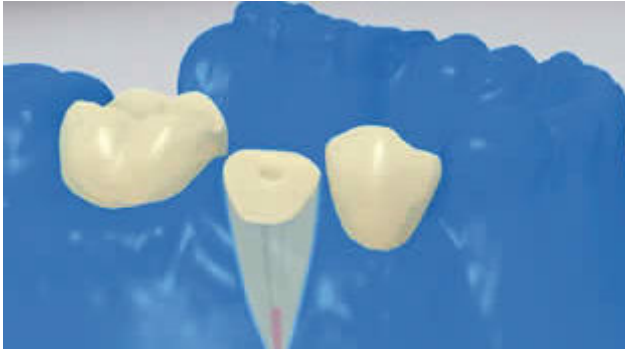
Core build-up in vital and non-vital teeth



Flowchart SpeedCEM Plus

TOOTH - Root post - Fiber-reinforced composite - SpeedCEM Plus

1 Preoperative situation



Relative isolation of the treatment field - preferably with **OptraDam** or alternatively with absorbent pads and a saliva ejector - is indispensable.

2 The root post is tried in

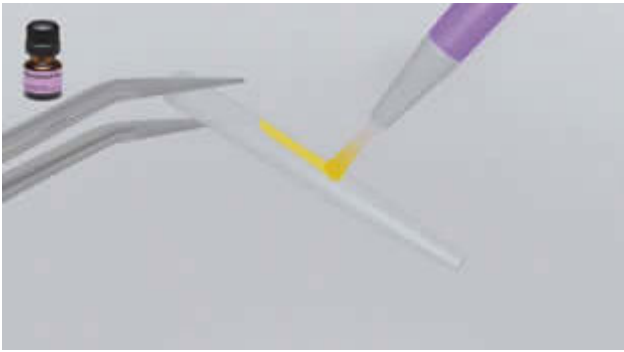


The root post is tried in. If prefabricated posts are used, the excess length is determined and the post is shortened extraorally by means of rotating diamond grinding instruments.

3 The root post is pretreated

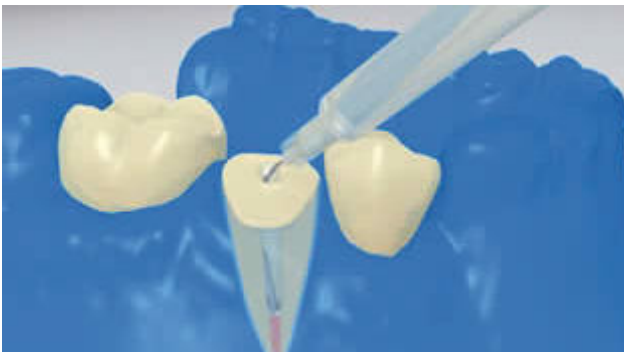


FRC Postec Plus is cleaned with phosphoric acid (e.g. **Total Etch**) after try-in. The etching gel is allowed to react for 60 sec. Then, it is thoroughly rinsed off with water and the post is dried. Other glass-fibre posts have to be conditioned acc. to the directions of the manufacturer.



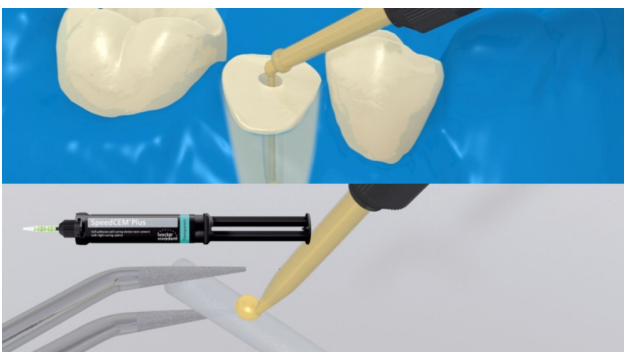
Monobond Plus is applied to the post with a brush or microbrush. It is allowed to react for 60 seconds. Subsequently, it is dispersed with a strong stream of air

4 The conditioned root canal is disinfected



Finally, the conditioned root canal is disinfected and dried with paper points.

5 SpeedCEM Plus is applied

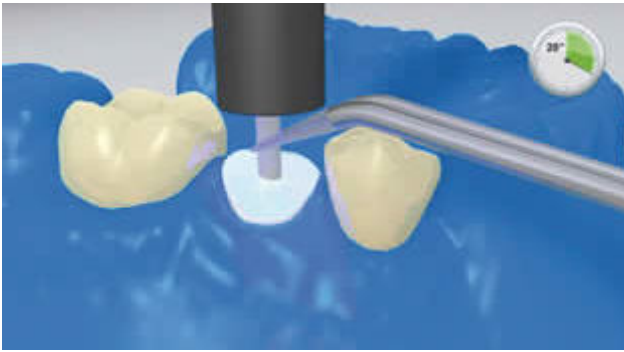


The root post prepared according to the instructions of the manufacturer is coated with mixed **SpeedCEM Plus**. Furthermore, SpeedCEM Plus can be placed directly in the root canal using Intra Canal Tips.

6 The root post is seated

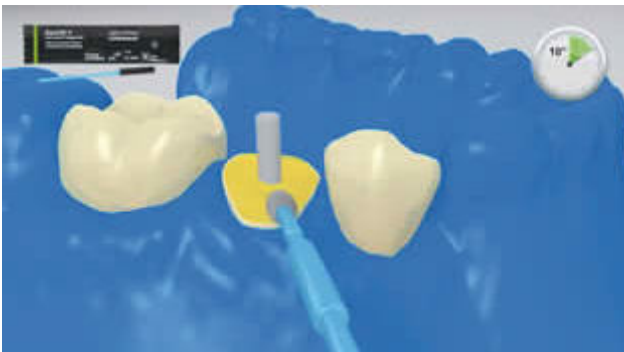


The root posts are placed and excess is removed.

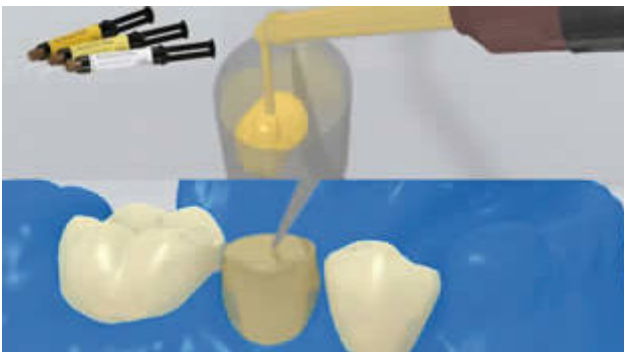


Next, **SpeedCEM Plus** is light-cured for 20 seconds. During this time, the post is held in place with the polymerization light. Materials that are opaque, in other words, impervious to light, should be allowed to self-cure.

7 Core build-up



Clean dentin surfaces are etched and finally coated with a dentin bonding agent (e.g. **ExciTE F**, Syntac).



The core build-up material (e.g. **MultiCore Flow**) is filled in a core coping. Subsequently, a small amount of core build-up material is directly applied to the conditioned dentin. The core coping is placed on the prepared tooth



The core build-up material is cured according to the directions of the manufacturer.

8 Core build-up is prepared in accordance with a ferrule design



The core coping is removed and the the core build-up is prepared in accordance with a ferrule design.