

Used Products

TOOTH - Root post - Fiber-reinforced composite - Multilink Automix

☐ **Multilink Automix**

The universal self-curing luting composite with optional light-curing



☐ **OptraDam**

Anatomically shaped rubber dam for the absolute isolation of the working field



☐ **Total Etch**

Total Etch is an etching gel containing 37% phosphoric acid



☐ **Monobond Plus**

Monobond Plus is the universal primer for the conditioning of all types of restoration surfaces



☐ **MultiCore**

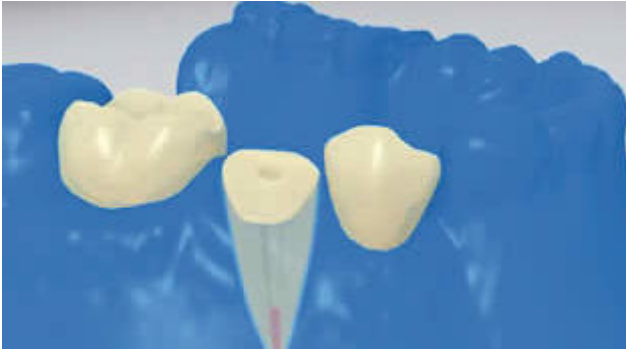
Core build-up in vital and non-vital teeth



Flowchart Multilink Automix

TOOTH - Root post - Fiber-reinforced composite - Multilink Automix

1 Preoperative situation



Relative isolation of the treatment field - preferably with **OptraDam** or alternatively with absorbent pads and a saliva ejector - is indispensable.

2 The root post is tried in

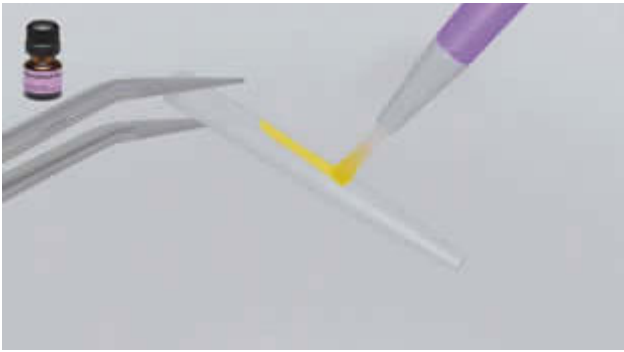


The root post is tried in. If prefabricated posts are used, the excess length is determined and the post is shortened extraorally by means of rotating diamond grinding instruments.

3 The root post is pretreated

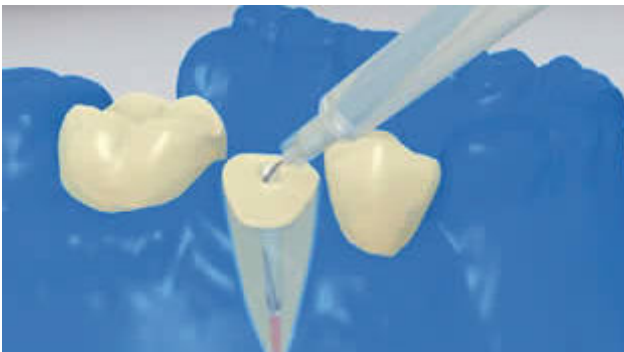


FRC Postec Plus is cleaned with phosphoric acid (e.g. **Total Etch**) after try-in. The etching gel is allowed to react for 60 sec. Then, it is thoroughly rinsed off with water and the post is dried. Other glass-fibre posts have to be conditioned acc. to the directions of the manufacturer.



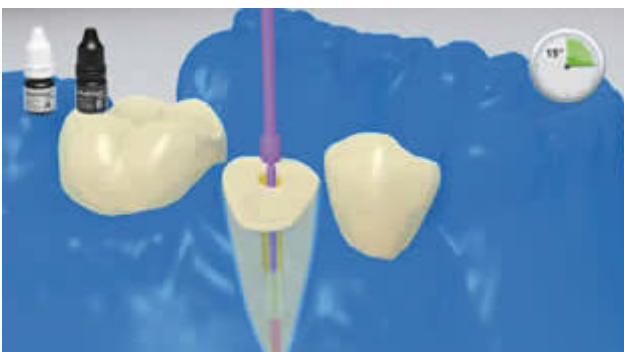
Monobond Plus is applied to the post with a brush or microbrush. It is allowed to react for 60 seconds. Subsequently, it is dispersed with a strong stream of air

4 The conditioned root canal is disinfected

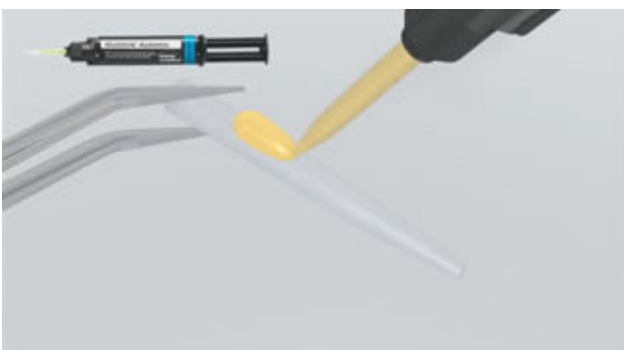


Finally, the conditioned root canal is disinfected and dried with paper points.

5 Multilink Primer A/B and Multilink Automix are applied



The mixed **Multilink Primer A/B** is applied to the root canal and the occlusal surface of the prepared tooth with a fine microbrush (Vivadent Applicator Small) for about 15 seconds. Excess is removed from the canal with paper points and dispersed with a stream of air from the surface.



The root post prepared according to the instructions of the manufacturer is coated with the mixed **Multilink Automix**.

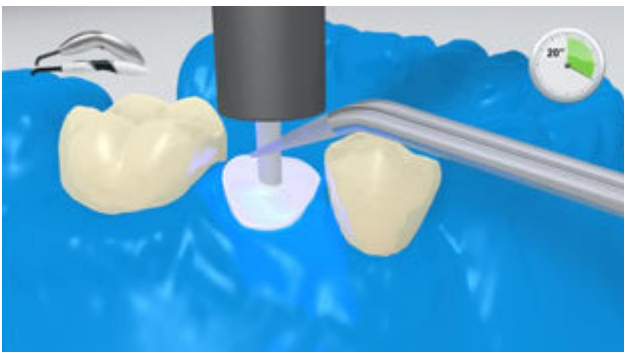
6 The root post is seated



The endodontic post is inserted, thus forcing out excess cement.

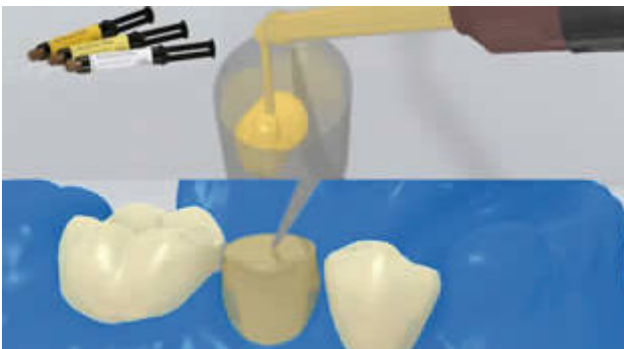


The cement can be distributed across the entire preparation surface for total coverage. Then **Multilink Automix** is light-cured for 20 sec. During this time, the post is held in place with the polymerization unit.

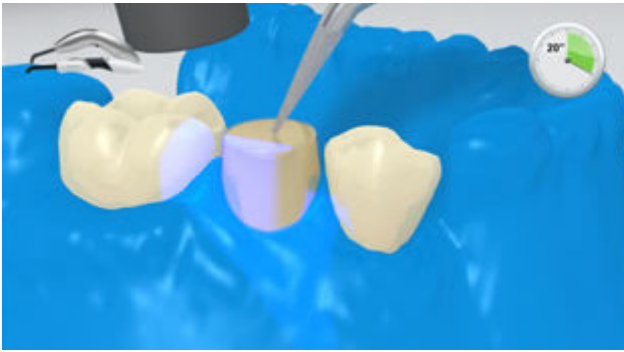


Materials that are opaque, in other words, impervious to light, should be allowed to self-cure. **Multilink Automix** serves as a bonding agent to the core build-up material.

7 Core build-up



The core build-up material (e.g. **MultiCore Flow**) is filled in the core coping. Subsequently, a small amount of the core build-up material is applied directly to Multilink Automix. The core coping is placed on the prepared tooth.



The core build-up material is cured according to the directions of the manufacturer.

8 Core build-up is prepared in accordance with a ferrule design



The core coping is removed and the the core build-up is prepared in accordance with a ferrule design.