

# Used Products

TOOTH - Inlay, Onlay, Partial Crown - Tetric CAD - Variolink Esthetic

☐ **Variolink Esthetic**

The esthetic, light- and dual-curing adhesive luting system



☐ **Proxyl fluoride-free**

Prophy paste without fluoride



☐ **OptraStick**

Application instrument that features a flexible adhesive tip



☐ **OptraDam**

Anatomically shaped rubber dam for the absolute isolation of the working field



☐ **Total Etch**

Total Etch is an etching gel containing 37% phosphoric acid



☐ **Adhese Universal**

Adhese Universal is a single-component, light-cured adhesive for direct and indirect bonding procedures that features compatibility with all etching techniques



☐ **Liquid Strip**

Glycerine gel to prevent the oxygen-inhibited layer of composites with composite or ceramic restorations



☐ **OptraPol**

OptraPol is excellently suitable for finishing and polishing all popular composite materials in a single step



☐ **Fluor Protector**

Fluor Protector is a protective fluoride varnish for desensitization and caries prophylaxis



# Flowchart Variolink Esthetic

TOOTH - Inlay, Onlay, Partial Crown - Tetric CAD - Variolink Esthetic

## 1 The temporary is removed

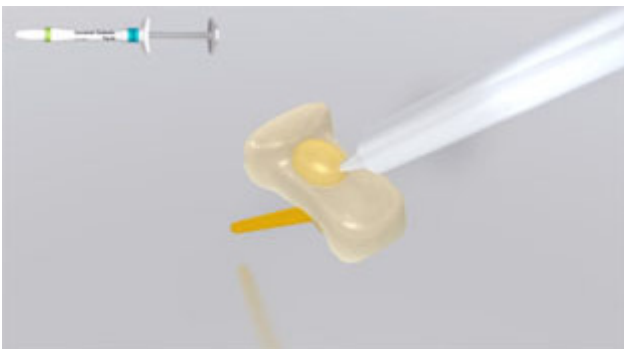


The temporary is removed. If necessary, any leftover temporary cement is removed from the preparation with a polishing brush and cleaning paste free of oil and fluoride (e.g. **Proxyl fluoride-free**). Subsequently, the preparation is dried with moisture-free and oil-free air.

## 2 The restoration is tried in



The permanent restoration is tried in. At this stage, the shade, accuracy of fit and occlusion of the restoration are checked.



In order to evaluate the overall effect of the restoration **Variolink Esthetic Try-In** pastes can be used. Following try-in, thoroughly rinse the restoration with water spray and dry with oil- and waterfree air.

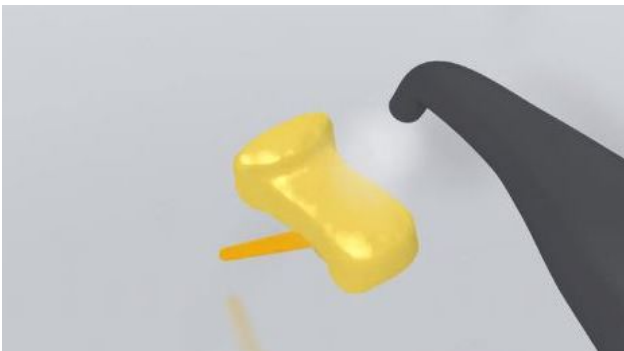
### 3 The restoration is pretreated



Sandblast the bonding surface with 50 – 100 µm aluminium oxide at 1 – 1.5 bar pressure. Clean the restoration in an ultrasonic unit with 70% ethanol.



Apply Adhese Universal on the conditioned surface and scrub it in for 20 seconds.



Following this, disperse Adhese Universal with oil-/moisture-free compressed air.

### 4 The preparation is isolated and cleaned



Relative isolation of the treatment field - preferably with **OptraDam** or alternatively with absorbent pads and a saliva ejector - is indispensable.



The preparation is cleaned with a polishing brush and moisture-free and fluoride-free cleaning paste (e.g. **Proxyl fluoride-free**). Then it is rinsed with water spray. Subsequently, it is dried with air free of oil and moisture. Overdrying must be avoided.

**5** The preparation is pretreated and the adhesive is applied



Apply phosphoric acid gel (e.g. **Total Etch**) onto the prepared enamel first, and then to the dentin. The etchant should be left to react on the enamel for 15 – 30 seconds and on the dentin for 10 – 15 seconds.



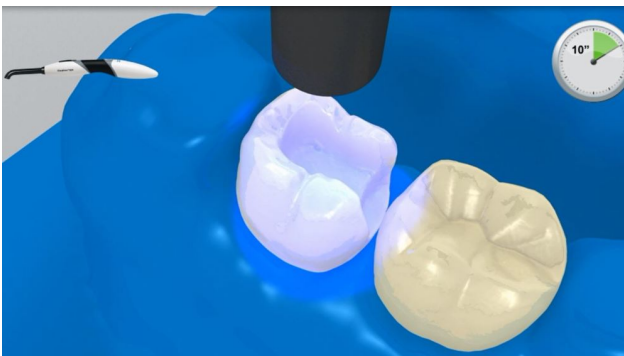
Then rinse thoroughly with a vigorous stream of water for at least 5 seconds and dry with compressed air until the etched enamel surfaces appear chalky white.



Starting with the enamel, thoroughly coat the tooth surfaces to be treated with **Adhese Universal**. The adhesive must be scrubbed into the surface for at least 20 seconds.

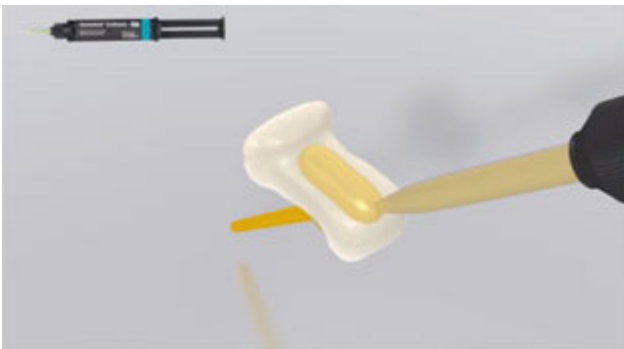


Disperse **Adhese Universal** with oil- and moisture-free compressed air until a glossy, immobile film layer results. Avoid pooling.

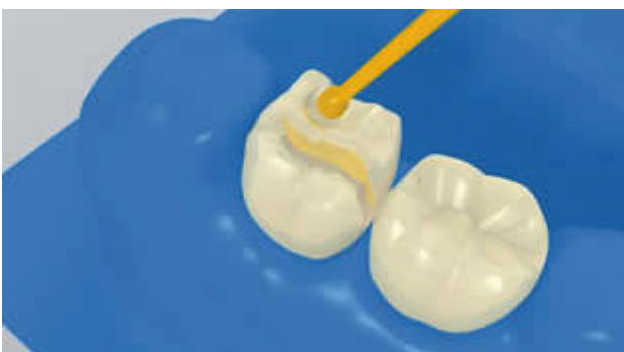


Light-cure **Adhese Universal** for 10 seconds using a light intensity of at least 500 mW/cm<sup>2</sup> (e.g. **Bluephase Style**).

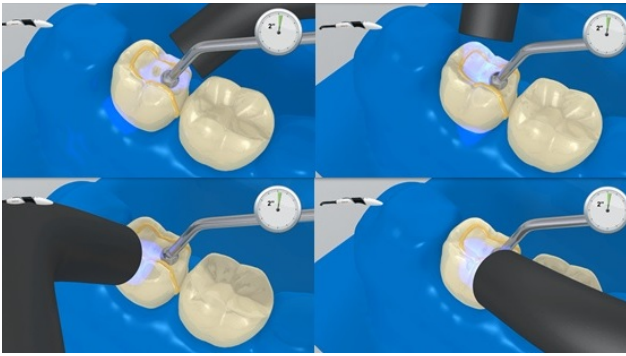
#### 6 Seating of the restoration using Variolink Esthetic



Dispense **Variolink Esthetic DC** from the automix syringe and apply the desired quantity directly to the restoration.



The restoration is seated and held in place using light constant pressure.



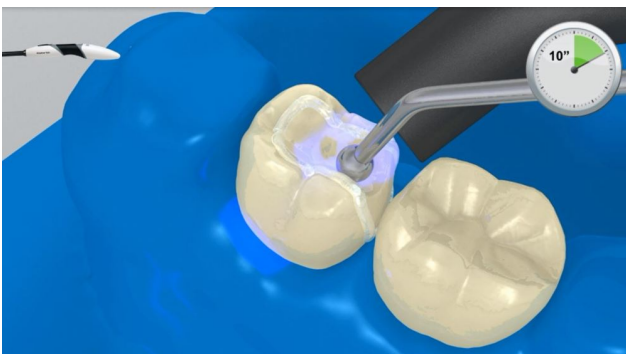
Light-cure excess material with the polymerization light (e.g. **Bluephase Style**) for **2 seconds** per quarter surface (mesio-oral, disto-oral, mesio-buccal, disto-buccal) at a distance of max. 10 mm.



The gel-like excess material can be easily removed with a scaler.



As with all composite systems, **Variolink Esthetic** is subject to oxygen inhibition. To prevent this, cover the restoration margins with glycerine gel/air block (e.g. **Liquid Strip**) immediately after excess removal.



When a polymerization unit with a light intensity of at least  $1000 \text{ mW/cm}^2$  is used, the composite resin must be cured for 10 seconds per mm thickness and segment (e.g. **Bluephase Style**).





**Liquid Strip** is rinsed off and the rubber dam is removed.

## 7 The completed restoration is finished



Proximal areas are adjusted with finishing and polishing strips. The occlusion and functional movements are checked and adjusted if necessary. The restoration margins are polished with polishers (e.g. **OptraPol**) or discs.

## 8 The teeth are fluoridated



A thin film of **Fluor Protector** is applied with a Vivabrush or brush and distributed evenly. The varnish is dried with an air syringe.