

Used Products

TOOTH - Inlay, Onlay, Partial Crown - Lab Composite - Variolink Esthetic - Excite F DSC

Variolink Esthetic

The esthetic, light- and dual-curing adhesive luting system



Proxyl fluoride-free

Prophy paste without fluoride



OptraStick

Application instrument that features a flexible adhesive tip



Ivoclean

The universal cleaning paste Ivoclean effectively cleans the bonding surfaces of prosthetic restorations after intraoral try-in



Monobond Plus

Monobond Plus is the universal primer for the conditioning of all types of restoration surfaces



OptraDam

Anatomically shaped rubber dam for the absolute isolation of the working field



Total Etch

Total Etch is an etching gel containing 37% phosphoric acid



Excite F DSC

Excite F DSC – Dual cure Single Component – is a dual-cure, fluoride releasing adhesive which is used in combination with the total-etch technique



Liquid Strip

Glycerine gel to prevent the oxygen-inhibited layer of composites with composite or ceramic restorations



OptraPol

OptraPol is excellently suitable for finishing and polishing all popular composite materials in a single step



Fluor Protector

Fluor Protector is a protective fluoride varnish for desensitization and caries prophylaxis



Flowchart Variolink Esthetic

TOOTH - Inlay, Onlay, Partial Crown - Lab Composite - Variolink Esthetic - Excite F DSC

1 The temporary is removed

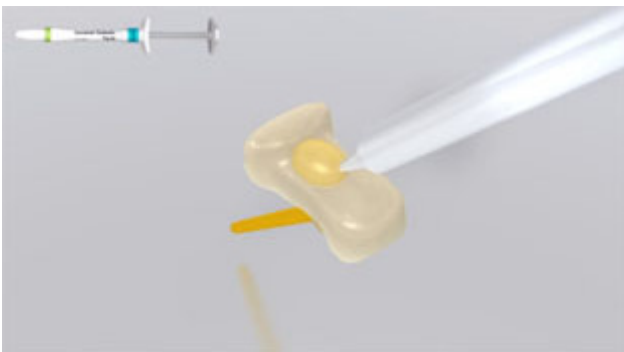


The temporary is removed. If necessary, any leftover temporary cement is removed from the preparation with a polishing brush and cleaning paste free of oil and fluoride (e.g. **Proxyl fluoride-free**). Subsequently, the preparation is dried with moisture-free and oil-free air.

2 The restoration is tried in



The permanent restoration is tried in. At this stage, the shade, accuracy of fit and occlusion of the restoration are checked.



In order to evaluate the overall effect of the restoration **Variolink Esthetic Try-In** pastes can be used. Following try-in, thoroughly rinse the restoration with water spray and dry with oil- and waterfree air.

3 The restoration is pretreated



The restoration is sandblasted according to the directions of the manufacturer of the restorative materials (e.g **SR Nexco**, 2 bar, Al₂O₃ 100 µm). Alternatively, the restoration is roughened with finishing diamonds.



Monobond Plus is applied to the pretreated surfaces with a brush or microbrush and left to react for 60 seconds. Subsequently, it is dried with a vigorous stream of air.

4 The preparation is isolated and cleaned

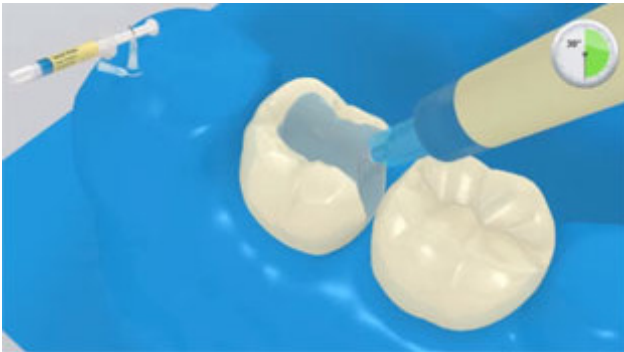


Relative isolation of the treatment field - preferably with **OptraDam** or alternatively with absorbent pads and a saliva ejector - is indispensable.



The preparation is cleaned with a polishing brush and moisture-free and fluoride-free cleaning paste (e.g. **Proxyl fluoride-free**). Then it is rinsed with water spray. Subsequently, it is dried with air free of oil and moisture. Overdrying must be avoided.

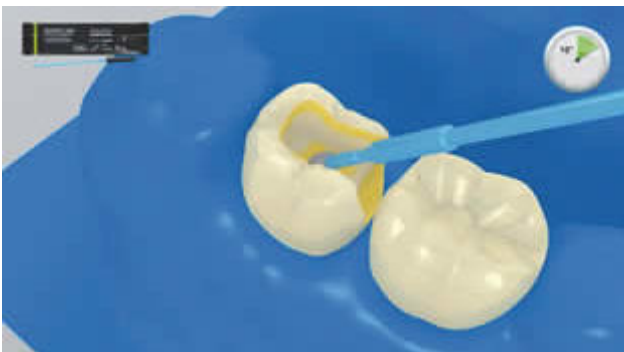
5 The preparation is pretreated and the adhesive is applied



Apply phosphoric acid gel (e.g. **Total Etch**) onto the prepared enamel first, and then to the dentin. The etchant should be left to react on the enamel for 15 – 30 seconds and on the dentin for 10 – 15 seconds.



Then rinse thoroughly with a vigorous stream of water for at least 5 seconds and dry with compressed air until the etched enamel surfaces appear chalky white.

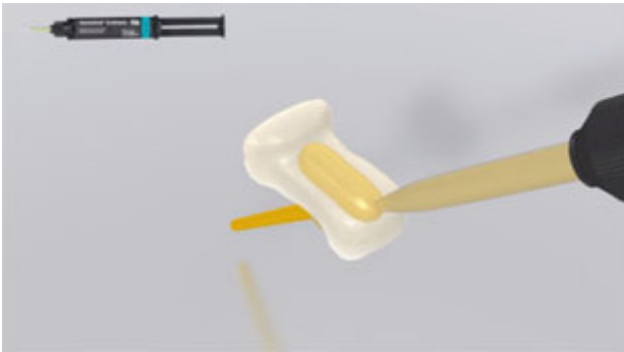


Next, **Excite F DSC** is applied to enamel and dentin and carefully agitated for at least 10 sec.



Excess **Excite F DSC** is blown to a thin film using a weak stream of air. Pooling must be avoided. A glossy appearance indicates that the surface has been completely sealed.

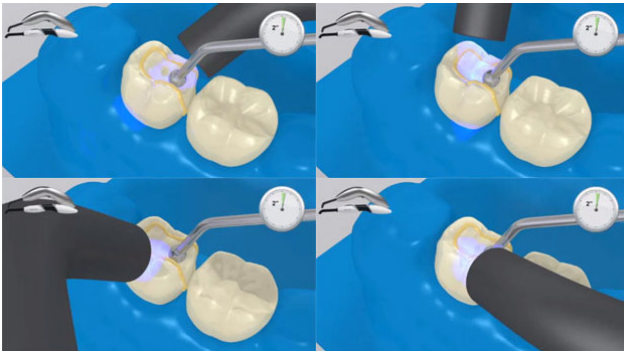
6 Seating of the restoration using Variolink Esthetic



Dispense **Variolink Esthetic DC** from the automix syringe and apply the desired quantity directly to the restoration.



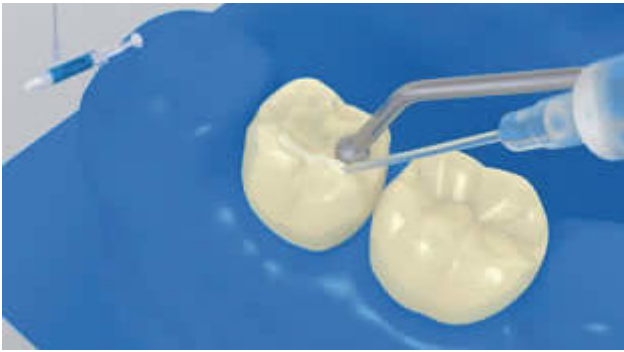
The restoration is seated and held in place using light constant pressure.



Light-cure excess material with the polymerization light (e.g. **Bluephase Style**) for **2 seconds** per quarter surface (mesio-oral, disto-oral, mesio-buccal, disto-buccal) at a distance of max. 10 mm.



The gel-like excess material can be easily removed with a scaler.



As with all composite systems, **Variolink Esthetic** is subject to oxygen inhibition. To prevent this, cover the restoration margins with glycerine gel/air block (e.g. **Liquid Strip**) immediately after excess removal.



When a polymerization unit with a light intensity of at least 1000 mW/cm^2 is used, the composite resin must be cured for 10 seconds per mm thickness and segment (e.g. **Bluephase Style**).



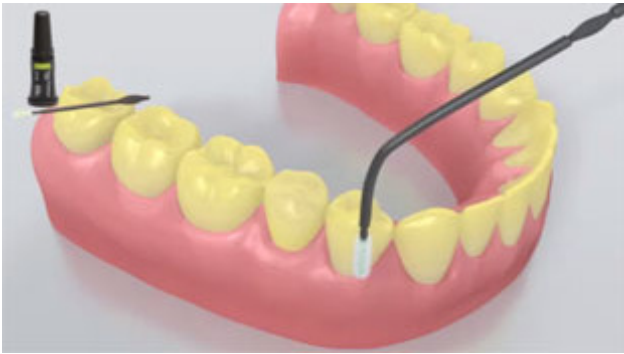
Liquid Strip is rinsed off and the rubber dam is removed.

7 The completed restoration is finished



Proximal areas are adjusted with finishing and polishing strips. The occlusion and functional movements are checked and adjusted if necessary. The restoration margins are polished with polishers (e.g. **OptraPol**) or discs.

8 The teeth are fluoridated



A thin film of **Fluor Protector** is applied with a Vivabrush or brush and distributed evenly. The varnish is dried with an air syringe.