

Used Products

TOOTH - Bridge - Lithium Disilicate - Retentive Preparation - Super- and equigingival - Visible margin - Multilink Automix

☐ **Multilink Automix**

The universal self-curing luting composite with optional light-curing



☐ **Proxyl fluoride-free**

Prophy paste without fluoride



☐ **OptraStick**

Application instrument that features a flexible adhesive tip



☐ **Monobond Etch&Prime**

Monobond Etch & Prime is the first single-component ceramic primer in the world, which allows you to etch and silanate glass-ceramic surfaces in one easy step



☐ **OptraDam**

Anatomically shaped rubber dam for the absolute isolation of the working field



☐ **Liquid Strip**

Glycerine gel to prevent the oxygen-inhibited layer of composites with composite or ceramic restorations



☐ **OptraPol**

OptraPol is excellently suitable for finishing and polishing all popular composite materials in a single step



☐ **Fluor Protector**

Fluor Protector is a protective fluoride varnish for desensitization and caries prophylaxis



Flowchart Multilink Automix

TOOTH - Bridge - Lithium Disilicate - Retentive Preparation - Super- and equigingival - Visible margin - Multilink Automix

1 The temporary is removed



The temporary is removed. If necessary, any leftover temporary cement is removed from the preparation with a polishing brush and cleaning paste free of oil and fluoride (e.g. **Proxyl fluoride-free**). Subsequently, the preparation is dried with moisture-free and oil-free air.

2 The restoration is tried in

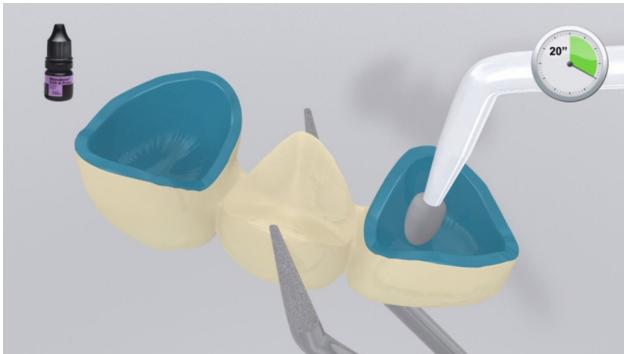


The permanent restoration is tried in. At this stage, the shade, accuracy of fit and occlusion of the restoration are checked.

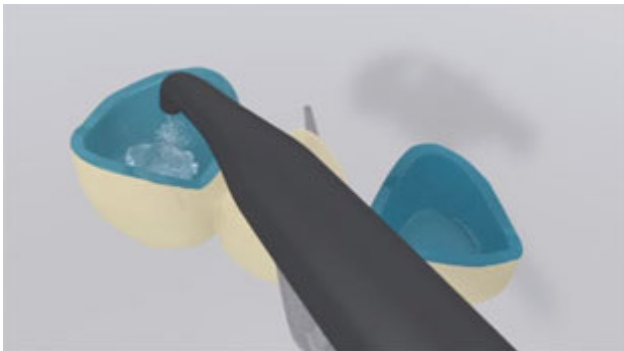


For optimum esthetic results, the shade of the restoration is checked with **Multilink Automix Try-In** pastes. After try-in, the paste is thoroughly removed with water spray and the restoration is dried with oil-free and moisture-free air.

3 The restoration is pretreated



Apply **Monobond Etch & Prime** on the adhesive surface using a microbrush and agitate it into the surface for 20 seconds. Allow to react for another 40 seconds.

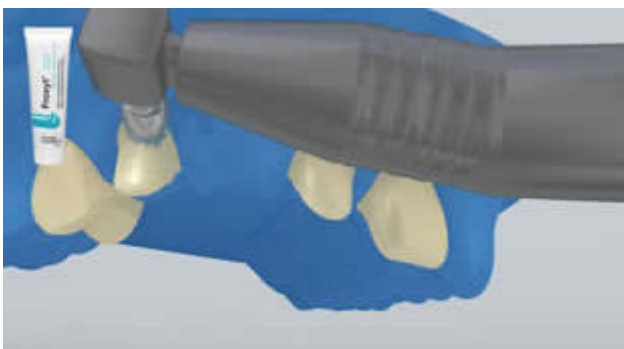


Then thoroughly rinse off **Monobond Etch & Prime** with water and dry the restoration with a strong jet of water- and oil-free air for approximately 10 seconds.

4 The preparation is isolated and cleaned

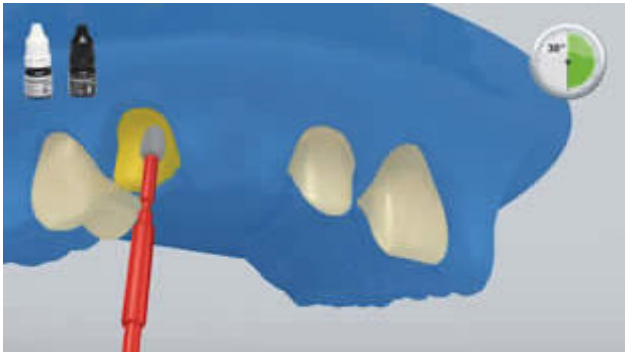


Relative isolation of the treatment field - preferably with **OptraDam** or alternatively with absorbent pads and a saliva ejector - is indispensable.

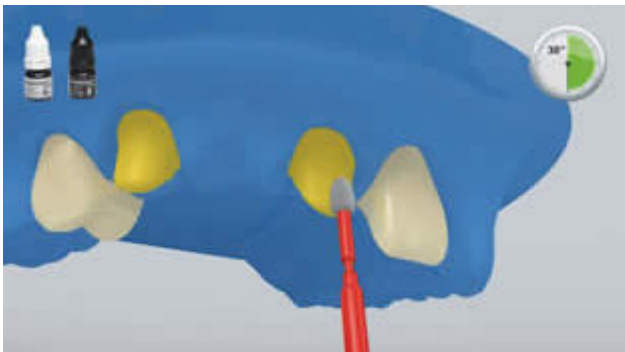


The preparation is cleaned with a polishing brush and moisture-free and fluoride-free cleaning paste (e.g. **Proxyl fluoride-free**). Then it is rinsed with water spray. Subsequently, it is dried with air free of oil and moisture. Overdrying must be avoided.

5 Multilink Primer A/B and Multilink Automix are applied



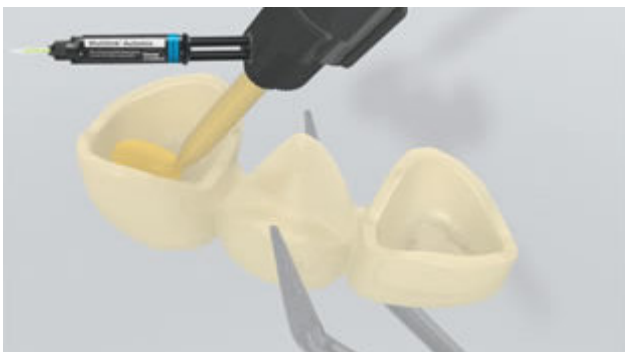
Apply the mixed Multilink Primer A/B onto the entire bonding surface using a microbrush, starting with the enamel surface, and scrub it in for 30 sec.



The microbrush is wetted with fresh adhesive for every abutment tooth.



Excess **Multilink Primer** is dispersed with a strong stream of air until the mobile film disappears. As the primer is self-curing, light-curing is unnecessary!

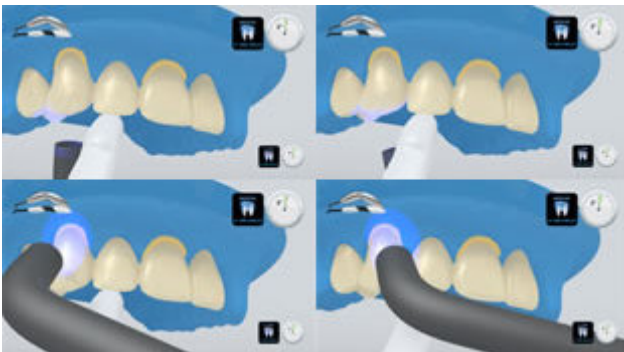


Multilink Automix is dispensed from the automix syringe and the desired amount is applied directly to the restoration.

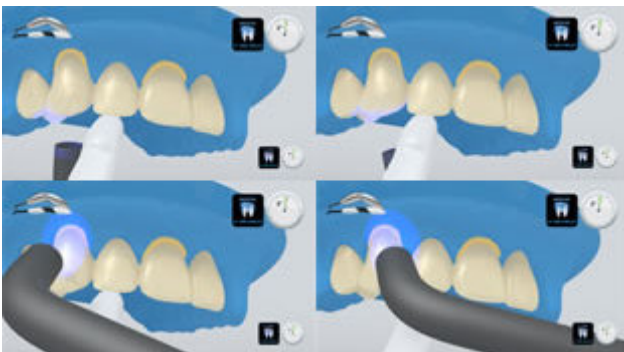
6 The restoration is seated and excess cement is removed



The restoration is seated and held in place using light constant pressure.



Light-cure excess cement in quarter segments (mesio-oral, disto-oral, mesio-buccal, disto-buccal) using a polymerization light at a distance of max. 10 mm.



Light intensity approx. 650 mW/cm²: 3 sec Exposure time per quarter segment - e.g. **Bluephase** in LOW POWER mode
Light intensity approx. 1,000 mW/cm²: 1-2 sec Exposure time per quarter segment - e.g. **Bluephase Style** or **Bluephase** in HIGH POWER mode



The gel-like excess material can be easily removed with a scaler.



Like all composites, **Multilink Automix** is subject to oxygen inhibition. In order to avoid this problem, it is advisable to cover the restoration margins with glycerine gel/air block (e.g. **Liquid Strip**) immediately after the removal of excess cement.



Subsequently all the cement margins are light cured for another 20 seconds (approx. 1,100 mW/cm²). Materials that are opaque, in other words, impervious to light, should be allowed to self-cure.



Liquid Strip is rinsed off and the rubber dam is removed.

7 The completed restoration is finished



Proximal areas are adjusted with finishing and polishing strips. The occlusion and functional movements are checked and adjusted if necessary. The restoration margins are polished with polishers (e.g. **OptraPol**) or discs.

8 The teeth are fluoridated



A thin film of **Fluor Protector** is applied with a Vivabrush or brush and distributed evenly. The varnish is dried with an air syringe.