

Used Products

IMPLANT - Abutment made of zirconium oxide - Crown - Metal - Retentive abutment shape - Posterior tooth - Vivaglass CEM

VivaglassCEM PL

VivaglassCEM PL is a highly translucent self-curing, radiopaque glass-ionomer cement



OptraStick

Application instrument that features a flexible adhesive tip



Telio CS Inlay

Temporary light-curing filling material for deep inlay preparations with parallel walls and sealing of implant screw access holes



OptraGate

Allows lips and cheeks to be retracted completely and ensures relative isolation



Ivoclean

The universal cleaning paste Ivoclean effectively cleans the bonding surfaces of prosthetic restorations after intraoral try-in



OptraPol

OptraPol is excellently suitable for finishing and polishing all popular composite materials in a single step



Cervitec Plus

The protective varnish containing chlorhexidine and thymol protects exposed root surfaces and controls bacteria



Flowchart Vivaglass CEM

IMPLANT - Abutment made of zirconium oxide - Crown - Metal - Retentive abutment shape - Posterior tooth - Vivaglass CEM

1 Preoperative situation



The abutment is screwed in place.

2 The restoration is tried in



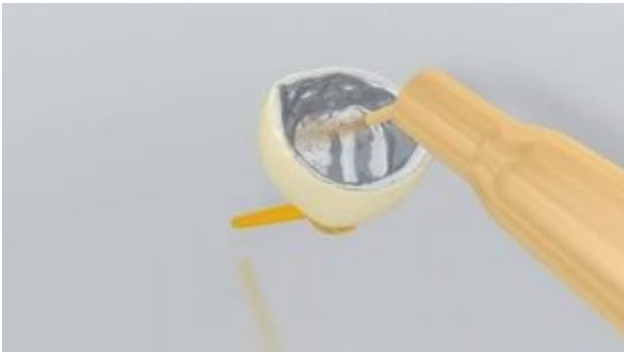
The permanent restoration is tried in. At this stage, the shade, accuracy of fit and occlusion of the restoration are checked.

3 The screw access opening is cleaned and sealed.



The screw access opening is thoroughly rinsed with water spray and dried with oil-free air. Subsequently, the screw access opening is sealed with cotton wool or a foam pellet and **Telio CS Inlay**. For all further treatment steps, relative isolation of the operating field, e.g. with **OptraGate**, is indispensable. A retraction cord may optionally be placed.

4 The restoration is pretreated

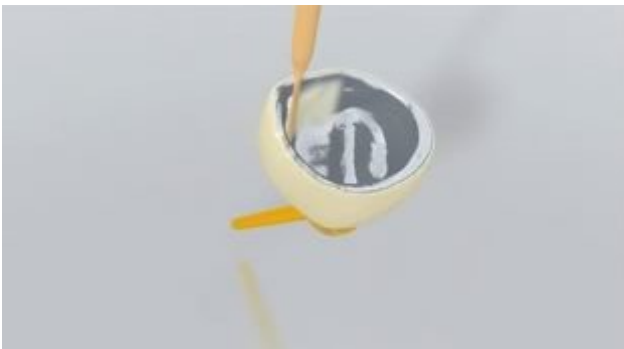


The inner surfaces of the restoration are sandblasted as directed by the manufacturer of the restorative materials.

5 Vivaglass CEM is mixed and applied



The **Vivaglass CEM** powder and liquid are mixed in a 1:1 ratio.



The luting material is applied to the restoration with a spatula or brush.

6 The restoration is seated and excess cement is removed

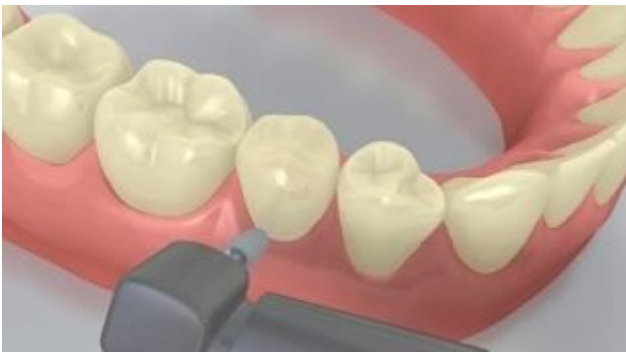


The restoration is seated and held in place using light constant pressure.



Once the cement has completely set, excess is removed e.g. with an implant scaler. The setting time is 4-6 minutes.

7 The completed restoration is finished



Proximal areas are adjusted with finishers and polishers. The occlusion and functional movements are checked and adjusted if necessary. The restoration margins are polished with polishers (**OptraPol**) or discs.

8 Follow-up care



A thin layer of **Cervitec Plus** is applied where it is needed with the help of a Vivadent applicator or a brush. The varnish sets by itself or with the application of a stream of air.