

Used Products

IMPLANT - Abutment made of titanium - Crown - Lithium disilicate - Retentive abutment shape - Anterior tooth - SpeedCEM Plus

SpeedCEM Plus

The self-adhesive, self-curing resin cement with light-curing option



OptraStick

Application instrument that features a flexible adhesive tip



Telio CS Inlay

Temporary light-curing filling material for deep inlay preparations with parallel walls and sealing of implant screw access holes



OptraGate

Allows lips and cheeks to be retracted completely and ensures relative isolation



Ivoclean

The universal cleaning paste Ivoclean effectively cleans the bonding surfaces of prosthetic restorations after intraoral try-in



Monobond Plus

Monobond Plus is the universal primer for the conditioning of all types of restoration surfaces



Liquid Strip

Glycerine gel to prevent the oxygen-inhibited layer of composites with composite or ceramic restorations



OptraPol

OptraPol is excellently suitable for finishing and polishing all popular composite materials in a single step



Cervitec Plus

The protective varnish containing chlorhexidine and thymol protects exposed root surfaces and controls bacteria



Flowchart SpeedCEM Plus

IMPLANT - Abutment made of titanium - Crown - Lithium disilicate - Retentive abutment shape - Anterior tooth - SpeedCEM Plus

1 Preoperative situation



The abutment is screwed in place.

2 The restoration is tried in



The permanent restoration is tried in. At this stage, the shade, accuracy of fit and occlusion of the restoration are checked.

3 The screw access opening is cleaned and sealed.



The screw access opening is thoroughly rinsed with water spray and dried with oil-free air. Subsequently, the screw access opening is sealed with cotton wool or a foam pellet and **Telio CS Inlay**. For all further treatment steps, relative isolation of the operating field, e.g. with **OptraGate**, is indispensable. A retraction cord may optionally be placed.

4 The restoration is pretreated



The restoration is etched with 5% hydrofluoric acid (e.g. **IPS Ceramic Etching Gel**) for 20 seconds.



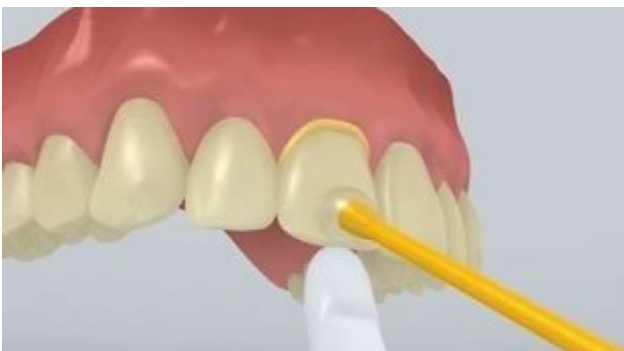
Monobond Plus is applied to the pretreated surfaces with a brush or microbrush and left to react for 60 seconds. Subsequently, it is dried with a vigorous stream of air.

5 SpeedCEM Plus is applied



SpeedCEM Plus is dispensed from the automix syringe and the desired amount is directly applied to the bonding surface of the restoration.

6 The restoration is seated and excess cement is removed



The restoration is seated and held in place using light constant pressure.



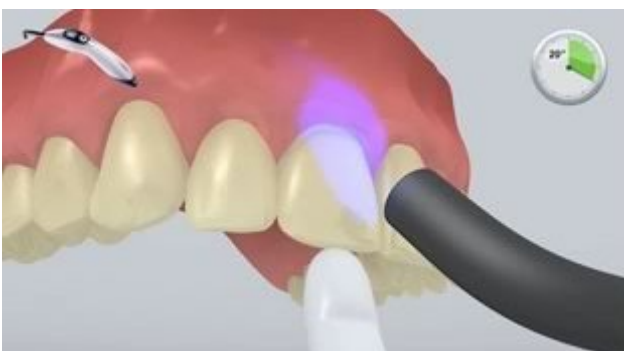
Excess cement is light-cured with a polymerization unit (circa 650 mW/cm^2) for 1 second per quarter surface (mesio-oral, disto-oral, mesio-buccal, disto-buccal) at a distance of approx 0-10 mm.



The gel-like excess material can be easily removed with an implant scaler.



Like all composites, **SpeedCEM Plus** is subject to oxygen inhibition. In order to avoid this problem, it is advisable to cover the restoration margins with glycerine gel/air block (e.g **Liquid Strip**) immediately after the removal of excess cement.



Subsequently all the cement margins are light cured for another 20 seconds (approx. $1,100 \text{ mW/cm}^2$). Materials that are opaque, in other words, impervious to light, should be allowed to self-cure.



Liquid Strip is rinsed off and where required OptraGate or the absorbent pads and retraction cords are removed.

7 The completed restoration is finished



Proximal areas are adjusted with finishers and polishers. The occlusion and functional movements are checked and adjusted if necessary. The restoration margins are polished with polishers (**OptraPol**) or discs.

8 Follow-up care



A thin layer of **Cervitec Plus** is applied where it is needed with the help of a Vivadent applicator or a brush. The varnish sets by itself or with the application of a stream of air.